

The development of a Sub Regional Children's Residential Assessment Unit

Well-being Impact Assessment Report

This report summarises the likely impact of the proposal on the social, economic, environmental and cultural well-being of Denbighshire, Wales and the world.


Assessment Number:	899
--------------------	-----

Brief description:	<p>A collaboration project between Denbighshire County Council (DCC), Conwy County Borough Council (CCBC) and Betsi Cadwalader University Health Board has been initiated to develop a Sub Regional Residential Children's Assessment Centre to serve both Conwy and Denbighshire. Currently DCC or CCBC do not have a model for delivering a co-ordinated solution for assessing the needs of children coming in to care necessary to evaluate needs and pathway options. There is a significant shortage of specialist placements for young people with significant emotional and behavioural challenges in North Wales resulting in these young people often being placed out of county, sometimes significant distances from their home or remaining in hospital settings. In addition North Wales has a high number of children from outside the region who are looked after locally and this number has been increasing. This places additional demand on local services such as health, education, police and support services. The Sub Regional Residential Children's Assessment Centre will be a place where the children can be safely cared for and nurtured by a residential team. The role and function of the Unit is to enable a formulation of need with psychological input, to ensure that the future care and support plan offered to both 'sides' maximises the potential for those children to return home / to family and avoid becoming LAC. Assessment of the child and the family's ability to parent the child would be undertaken through the provision of a wide range of therapeutic services appropriate for the child. The assessment centre which will be located in Colwyn Bay will be comprised of 3 buildings including an assessment unit along with a pre-planned and unplanned residential accommodation block for up to 6 children and young people for a maximum length of 12 weeks. This provision will accommodate children and young people from the two local authorities working in partnership, with admissions based on demand.</p>
Date Completed:	Version: 0
Completed by:	
Responsible Service:	Education & Children Services
Localities affected by the proposal:	Whole County,
Who will be affected by the proposal?	<p>Children, families / alternative carers Residential providers and foster carers Residents of Conwy and Denbighshire Social Work Teams for Conwy County Borough Council and Denbighshire County Council BCUHB Family Centres (Conwy), Early Intervention Team (DCC) Education Services (CCBC & DCC)</p>
Was this impact assessment completed as a group?	Yes

IMPACT ASSESSMENT SUMMARY AND CONCLUSION

Before we look in detail at the contribution and impact of the proposal, it is important to consider how the proposal is applying the sustainable development principle. This means that we must act "in a manner which seeks to ensure that the needs of the present are met without compromising the ability of future generations to meet their own needs."

Score for the sustainability of the approach

 (3 out of 4 stars) Actual score : 28 / 36.

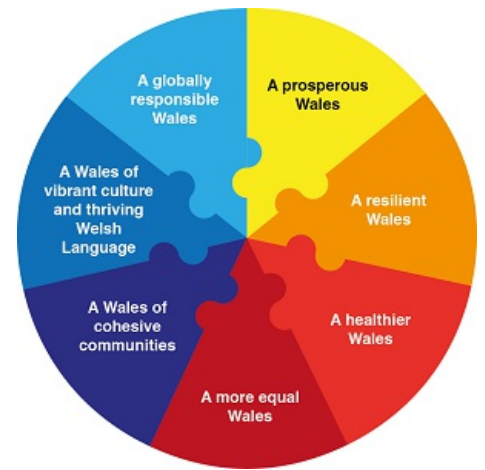
Summary for each Sustainable Development principle

Long term	The role and function of the Unit is to provide support to ensure that the future care and support plan offered to child and carer maximises the potential for those children to return home / to family and avoid becoming LAC. This will support long term needs and will provide significant long term benefits for both the child and carer in the future. The project has considered and developed into the design infrastructure resilience to limit impact and tackles climate change.
Prevention	The unit will identify support needs meaning that there is a greater chance of avoiding future placement breakdown, be that in foster care or a longer term residential unit. Resulting in a reliance on public services and preventing issues escalating. The design will be developed on a semi brownfield site and has considered the use of energy efficient including air source heating, LED lighting and planting. BREEAM will be followed as good practice, although the certificate is not required by WG.
Integration	The proposal is consistent with the premise of the Social Services and Well-Being Act in its focus on ensuring early intervention and prevention to avoid high levels of dependency and costs. The project also meets corporate plan priorities to support children and young people and their families. As a result the Central Area Integrated Service Board has prioritised the development of a sub-regional Children's Assessment Centre from regional ICF capital funding allocation.
Collaboration	This is a tripartite provision between DCC, CCBC and BCUHB. The partnership will have significant benefits for Health, Education, Police as a result due to the new provision providing early intervention, easing capacity on these services.
Involvement	Consultation with stakeholders, such as staff all 3 partners, service users and local residents will be conducted throughout the project to ensure that any issues and concerns will be considered, to improve the development and reduce the impact on the local community.

Summary of impact

Well-being Goals

A prosperous Denbighshire	Positive
A resilient Denbighshire	Neutral
A healthier Denbighshire	Positive
A more equal Denbighshire	Positive
A Denbighshire of cohesive communities	Positive
A Denbighshire of vibrant culture and thriving Welsh language	Positive



Main conclusions

The assessment overall will have a positive impact. The document has assessed the project and some of the elements, as the project is based in Conwy, will not impact directly on Denbighshire. However its impact on the region / area has been considered in drawing up the assessment.

A prosperous Denbighshire:

The Sub Regional Residential Children's Assessment Centre will be a place where the children can be safely cared for and nurtured by a residential team.

The role and function of the Unit will enable a formulation of need with psychological input, to ensure that the future care and support plan offered to both 'sides' maximises the potential for those children to return home / to family and avoid becoming LAC as well as reducing costs of out of county placements long term.

This proposal will provide the local community with opportunities to enhance skills through training, work experience and apprenticeships in addition to providing potential job opportunities within the construction industry.

The proposal will also use local sub - contractors as part of the procurement process resulting investment within the local economy.

As CCBC are the lead partner and the asset will be in Conwy, CCBC will be responsible for resolving negative impacts and monitoring performance.

Training will be provided to staff on how to use the BMS system and the site will be monitored to ensure that the site is running efficiently.

A resilient Denbighshire:

Although there is potential of some impact on the environment as a result of this proposal, measures have and will be put in place following the recommendation from the surveys (land, ecology and NRW), to minimise any risk and potential impact on the environment. The procurement process has ensured that contractors will implement these measures and all attempts will be made to reduce waste, fuel consumption and impact on the environment.

As CCBC are the lead partner and the asset will be in Conwy, CCBC will be responsible for resolving negative impacts and monitoring performance.

Ensuring that measure are put in place following the recommendations set out in the surveys that will be undertaken. e.g suitable alternatives for the local wildlife to inhabit. A detailed ecology and arboriculture survey have been undertaken on the proposed site to ensure that any impact on existing biodiversity is minimised where possible.

A healthier Denbighshire:

The new provision for the region, will bring many health and well - being benefits to it service users and allow capacity with local services such as health, education, police and support services to be eased.

As CCBC are the lead partner and the asset will be in Conwy, CCBC will be responsible for resolving negative impacts and monitoring performance.

Local residents have had an opportunity to provide feedback at planning and as part of the land appropriation process.

Once the project is at the construction phase, residents will be informed and kept up to date with the build progress and any potential disruptions.

A more equal Denbighshire:

The building has been designed to ensure it is compliant with the Equalities Act to ensure full accessibility across the site. The facilities have been designed in consultation with the MDT team, to consider the needs of service users and at key stages service users will be consulted on the design to ensure that the site meets their needs.

This service will focus attention on the needs of the child therefore consideration has been given to the ability of the staff team to meet the needs of disabled parents in order to provide the service for their children.

The construction of the new site will provide potential for engagement with NEETs to gain work experience or paid work as part of the community benefits associated with the scheme.

A Denbighshire of cohesive communities:

The building has been designed to ensure staff and service user safety. The design will consider security, access, and anti-ligature needs.

The project provides a safe environment to support to children and their families or carers to enable a formulation of need with psychological input, to ensure that the future care and support plan offered to both 'sides' maximises the potential for those children to return home / to family and avoid becoming LAC. Having this locally will improve the chances of reducing LAC and improve the quality of service which can be provided.

Community involvement via planning consultation and will provide ownership within the proposal, providing opportunity for feedback will ensure that any issues can be addressed by the construction contractor to reduce dissatisfaction from residents.

Communication: Keeping the MDT team, local members and the community up to date with the progress of the project through newsletters, the blogs and project meetings. A centralised communication strategy has been developed within the partnership to ensure that information is concise.

Planning: Ensuring disruptions to local residents are kept to a minimum through effective planning.

Dealing with complaints effectively: Dealing with any issues raised efficiently and within good time providing feedback, to ensure that the matter has been resolved. The project is being led by CCBC and therefore this will be managed by Conwy.

A Denbighshire of vibrant culture and thriving Welsh language:

Promotion of Welsh language during construction phase, encouragement for the use of Welsh medium staff - assisted with communications. Community benefits will also embrace Welsh culture and heritage through hosting activities and events during the construction phase.

CCBC as the project will support the contractor to address any communication to Welsh speaking residents/ stakeholders to ensure that their views are considered in their preferred language.

A globally responsible Denbighshire:

Looking to work with a responsible contractor.

The project will provide the first of its kind assessment centre for the region, which will transform provision reduce out of county placements and will contribute to the reduction of LAC long term.

Carbon efficient methods to build, power and heat the new facility have been included within the design and will be firmed up during the detailed stage.

Evidence to support the Well-being Impact Assessment

- We have consulted published research or guides that inform us about the likely impact of the proposal
- We have involved an expert / consulted a group who represent those who may be affected by the proposal
- We have engaged with people who will be affected by the proposal

THE LIKELY IMPACT ON DENBIGHSHIRE, WALES AND THE WORLD

A prosperous Denbighshire

Overall Impact	Positive
Justification for impact	<p>The Sub Regional Residential Children’s Assessment Centre will be a place where the children can be safely cared for and nurtured by a residential team.</p> <p>The role and function of the Unit will enable a formulation of need with psychological input, to ensure that the future care and support plan offered to both ‘sides’ maximises the potential for those children to return home / to family and avoid becoming LAC as well as reducing costs of out of county placements long term.</p> <p>This proposal will provide the local community with opportunities to enhance skills through training, work experience and apprenticeships in addition to providing potential job opportunities within the construction industry.</p> <p>The proposal will also use local sub - contractors as part of the procurement process resulting investment within the local economy.</p>
Further actions required	As CCBC are the lead partner and the asset will be in Conwy, CCBC will be responsible for resolving negative impacts and monitoring performance. Training will be provided to staff on how to use the BMS system and the site will be monitored to ensure that the site is running efficiently.

Positive impacts identified:

A low carbon society	The design has considered climate change and included the use of energy efficient items such as air source heating, LED lighting and vegetation. BREEAM will be followed as good practice, although the certificate is not required by WG.
Quality communications, infrastructure and transport	<p>The new build will provide a future proof ICT infrastructure which will enhance the provision.</p> <p>The new build will be fully accessible.</p> <p>The location of the Centre will mean that children and Young people can receive this care closer to home. This significantly increases the possibility of these children (and their families / carers) receiving seamless CAMHS support and increasing the possibility of recovery and reunification. The site is also served by the main coastal bus route in Conwy.</p>
Economic development	<p>Strong emphasis on community benefits - targets met for local spend.</p> <p>Build will be tendered via the North Wales Construction Framework.</p> <p>DCC have been included within the tender process, will seek to maximise how the works are purchased to ensure local sub-contractors are used, boosting the local economy and sustaining local Jobs.</p> <p>Benefits for local suppliers - used by main contractors, benefits to convenience sector - accommodation, meals etc</p>

Quality skills for the long term	<p>The project will provide opportunities such as work experience, training, apprenticeships and job opportunities within the construction industry.</p> <p>Community Benefits will also be a key element of the project. The partnership is committed to delivering outcomes that help build stronger communities, reduce social exclusion and poverty and encourage the development of the economy. Community benefits will include creating training and employment opportunities, community engagement and contributing to the local economy.</p>
Quality jobs for the long term	<p>Brand new facility, and staffing team employed to facilitate the provision.</p> <p>The project will also provide opportunities for members of the community. Providing work experience, training, apprenticeships and job opportunities.</p>
Childcare	None

Negative impacts identified:

A low carbon society	Staff unable to operate new systems for building due to lack of training, personal preference for temperature, leaving lights on external doors open etc.
Quality communications, infrastructure and transport	None
Economic development	None
Quality skills for the long term	None
Quality jobs for the long term	Construction Aspect: Nature of projects means that work on site is limited to 10-12 months may restrict long term planning for jobs.
Childcare	None

A resilient Denbighshire

Overall Impact	Neutral
Justification for impact	Although there is potential of some impact on the environment as a result of this proposal, measures have and will be put in place following the recommendation from the surveys (land, ecology and NRW), to minimise any risk and potential impact on the environment. The procurement process has ensured that contractors will implement these measures and all attempts will be made to reduce waste, fuel consumption and impact on the environment.
Further actions required	As CCBC are the lead partner and the asset will be in Conwy, CCBC will be responsible for resolving negative impacts and monitoring performance. Ensuring that measure are put in place following the recommendations set out in the surveys that will be undertaken. e.g suitable alternatives for the local wildlife to inhabit. A detailed ecology and arboriculture survey have been undertaken on the proposed site to ensure that any impact on existing biodiversity is minimised where possible.

Positive impacts identified:

Biodiversity and the natural environment	Reduction of the carbon footprint will have a positive impact on the environment. Travel to out of county placements for meetings etc.
---	--

Biodiversity in the built environment	New landscaping for the site will be sympathetic to the surroundings.
Reducing waste, reusing and recycling	<p>Reducing waste, recycling, the controlling of hazardous substances and Health & Safety will form a key part of the procurement process, to ensure that impact on the environment is minimised.</p> <p>Contractor will have a waste management plan, ensure that this is a key element of the procurement process.</p>
Reduced energy/fuel consumption	<p>The new facility will reduce the need for out of county placements, this will also see a reduction in travel out of county for appointments, to provide support to service users mitigating additional travel.</p> <p>The building will be designed to minimise energy costs.</p> <p>Consideration will be made on how the transportation of materials and goods will be delivered to the site. The procurement process will ensure that measures are in place to reduce fuel consumption.</p>
People's awareness of the environment and biodiversity	Scope during the construction phase to involve the local community and schools and service users. This will be part of the community benefits and tender process.
Flood risk management	The proposal has been developed with guidance from consultants ensuring that proposal does not impact on flood risk management. Statutory consultees have also had an opportunity to review plans and comment on any potential flood risk issues during the planning stage.

Negative impacts identified:

Biodiversity and the natural environment	<p>Potential loss of trees and hedgerows may impact on the wildlife population. This will be mitigated with the landscaping on the new site.</p> <p>Badger sett in close proximity to the development may be impacted due to the construction works if not phased correctly.</p>
Biodiversity in the built environment	Potential disturbance of eco system on site as part of the demolition of the old buildings and the construction phase. Measures will be put in place to minimise the impact as advised by the site surveys.
Reducing waste, reusing and recycling	None
Reduced energy/fuel consumption	Building users not being able to operate the new systems correctly may result in an increase in energy consumption.
People's awareness of the environment and biodiversity	None
Flood risk management	None

A healthier Denbighshire

Overall Impact	Positive
Justification for impact	The new provision for the region, will bring many health and well - being benefits to it service users and allow capacity with local services such as health, education, police and support services to be eased.

Further actions required	As CCBC are the lead partner and the asset will be in Conwy, CCBC will be responsible for resolving negative impacts and monitoring performance. Local residents have had an opportunity to provide feedback at planning and as part of the land appropriation process. Once the project is at the construction phase, residents will be informed and kept up to date with the build progress and any potential disruptions.
---------------------------------	--

Positive impacts identified:

A social and physical environment that encourage and support health and well-being	The location of the Centre will mean that children and Young people can receive this care closer to home. This significantly increases the possibility of these children (and their families / carers) receiving seamless CAMHS support and increasing the possibility of recovery and reunification. This will have a positive impact on mental health and well-being.
Access to good quality, healthy food	The Unit will support children and their families with independent living skills and identify and financial issues which can be signposted to other organisations to support any health needs or poverty which could impact of being able to afford suitable and healthy food.
People's emotional and mental well-being	This will be a brand new facility for the region providing a new service. Supporting early intervention to avoid crisis situations and/or to prevent further escalation. The project will allow existing services to be maintained whilst enabling integrated approaches to be strengthened and enhanced. This will support the emotional and mental well-being of all users and will reduce impact on local services such as health, education, police and support services to ease capacity to support the wider community.
Access to healthcare	This will be a brand new facility for the region providing a new service. Supporting early intervention to avoid crisis situations and/or to prevent further escalation. The project will allow existing services to be maintained whilst enabling integrated approaches to be strengthened and enhanced. This will reduce impact on local services such as health, education, police and support services to ease capacity to support the wider community.
Participation in leisure opportunities	The Unit will provide recreational areas for service users to engage in leisure activities. There will also be an outside space on site as well as access to Eirias Park.

Negative impacts identified:

A social and physical environment that encourage and support health and well-being	None
Access to good quality, healthy food	None
People's emotional and mental well-being	None
Access to healthcare	None
Participation in leisure opportunities	A land appropriation of a small strip of land within Eirias Park, may result in local users and residents being dissatisfied.

A more equal Denbighshire

Overall Impact	Positive
-----------------------	----------

Justification for impact	<p>The building has been designed to ensure it is compliant with the Equalities Act to ensure full accessibility across the site. The facilities have been designed in consultation with the MDT team, to consider the needs of service users and at key stages service users will be consulted on the design to ensure that the site meets their needs.</p> <p>This service will focus attention on the needs of the child therefore consideration has be given to the ability of the staff team to meet the needs of disabled parents in order to provide the service for their children.</p> <p>The construction of the new site will provide potential for engagement with NEETs to gain work experience or paid work as part of the community benefits associated with the scheme.</p>
Further actions required	None

Positive impacts identified:

Improving the well-being of people with protected characteristics. The nine protected characteristics are: age; disability; gender reassignment; marriage or civil partnership; pregnancy and maternity; race; religion or belief; sex; and sexual orientation	<p>The building has been designed to ensure it is compliant with the Equalities Act to ensure full accessibility across the site. The facilities have been designed in consultation with the MDT team, to consider the needs of service users and at key stages service users will be consulted on the design to ensure that the site meets their needs.</p> <p>This service will focus attention on the needs of the child therefore consideration has be given to the ability of the staff team to meet the needs of disabled parents in order to provide the service for their children.</p>
People who suffer discrimination or disadvantage	N/A
People affected by socio-economic disadvantage and unequal outcomes	<p>The project will focus on the care of the service user and intervention to prevent the child from Becoming LAC which will contribute towards reducing these outcomes. However there will be opportunities to signpost service users to external organisations for additional support to challenge socio-economic disadvantage and unequal outcomes.</p> <p>Construction phase will target economically inactive - engagement with NEET's as part of the community benefits for the project.</p>
Areas affected by socio-economic disadvantage	A new purpose built facility will provide a better service to users, a reduction in out of county placements and an improved provision to enable work to be undertaken with parents and carers.

Negative impacts identified:

Improving the well-being of people with protected characteristics. The nine protected characteristics are: age; disability; gender reassignment; marriage or civil partnership; pregnancy and maternity; race; religion or belief; sex; and sexual orientation	None
People who suffer discrimination or disadvantage	N/A
People affected by socio-economic disadvantage and unequal outcomes	None
Areas affected by socio-economic disadvantage	None

A Denbighshire of cohesive communities

Overall Impact	Positive
Justification for impact	<p>The building has been designed to ensure staff and service user safety. The design will consider security, access, and anti-ligature needs.</p> <p>The project provides a safe environment to support to children and their families or carers to enable a formulation of need with psychological input, to ensure that the future care and support plan offered to both 'sides' maximises the potential for those children to return home / to family and avoid becoming LAC. Having this locally will improve the chances of reducing LAC and improve the quality of service which can be provided.</p> <p>Community involvement via planning consultation and will provide ownership within the proposal, providing opportunity for feedback will ensure that any issues can be addressed by the construction contractor to reduce dissatisfaction from residents.</p>
Further actions required	<p>Communication: Keeping the MDT team, local members and the community up to date with the progress of the project through newsletters, the blogs and project meetings. A centralised communication strategy has been developed within the partnership to ensure that information is concise. Planning: Ensuring disruptions to local residents are kept to a minimum through effective planning. Dealing with complaints effectively: Dealing with any issues raised efficiently and within good time providing feedback, to ensure that the matter has been resolved. The project is being led by CCBC and therefore this will be managed by Conwy.</p>

Positive impacts identified:

Safe communities and individuals	<p>The building has been designed to ensure staff and service user safety. The design will consider security, access, and anti-ligature needs.</p> <p>The project provides a safe environment to support to children and their families or carers to enable a formulation of need with psychological input, to ensure that the future care and support plan offered to both 'sides' maximises the potential for those children to return home / to family and avoid becoming LAC.</p>
Community participation and resilience	<p>Engagement from staff, service users and the local community will inform proposals for the design and layout for the new build. This has been undertaken through a number of different forms such as, meetings, consultations and all information regarding the potential development has been made available in the press and on CCBC's website.</p> <p>Planning consultation period provided residents, and interested parties with an opportunity to express their views and any concerns which were considered as part of the planning decision.</p>
The attractiveness of the area	<p>The proposal will provide a brand new regional facility within close distance to the service users local area. Avoiding the need to move school or be placed in an out of county placement, restricting the service which can be provided.</p>
Connected communities	<p>Access to the provision will be increased due to the location and close proximity to bus service routes.</p>
Rural resilience	<p>Having a provision within the region instead of sending service users to out of county placements means that there will be greater opportunities for families who live in rural areas to engage in the services resulting in better opportunities for reunification.</p>

Negative impacts identified:

Safe communities and individuals	None
Community participation and resilience	None
The attractiveness of the area	<p>Due to the nature of the provision, local residents may be resistant to the idea of having this facility in the community which could cause additional complaints.</p> <p>Construction is likely to take approx. 10-12 months during this time there may be disruptions within the surrounding area, including increased noise, increased pollution and increased traffic. Measures will be put in place to reduced disruptions.</p>
Connected communities	None
Rural resilience	None

A Denbighshire of vibrant culture and thriving Welsh language

Overall Impact	Positive
Justification for impact	<p>Promotion of Welsh language during construction phase, encouragement for the use of Welsh medium staff - assisted with communications. Community benefits will also embrace Welsh culture and heritage through hosting activities and events during the construction phase.</p>

Further actions required	CCBC as the project will support the contractor to address any communication to welsh speaking residents/ stakeholders to ensure that their views are considered in their preferred language.
---------------------------------	---

Positive impacts identified:

People using Welsh	All correspondence will be bilingual. This will also be a requirement of the tender for the construction contractor and all communication will be approved prior to circulation. Community benefits opportunities such as school visits and work placements will be delivered bilingually to encourage the use of Welsh language.
Promoting the Welsh language	All correspondence and signage will be bilingual and the use of Welsh language will be encouraged.
Culture and heritage	Staff within the MDT and residential team will promote Welsh culture and heritage where applicable. Community benefits will also embrace Welsh culture and heritage through hosting activities and events during the construction phase.

Negative impacts identified:

People using Welsh	None
Promoting the Welsh language	Depending on the appointment of the construction contractor, it may not be possible to have a Fluent welsh speaking site manager which could cause issues with residents who want to provide feedback in Welsh.
Culture and heritage	None

A globally responsible Denbighshire

Overall Impact	Positive
Justification for impact	Looking to work with a responsible contractor. The project will provide the first of its kind assessment centre for the region, which will transform provision reduce out of county placements and will contribute to the reduction of LAC long term. Carbon efficient methods to build, power and heat the new facility have been included within the design and will be firmed up during the detailed stage.
Further actions required	None

Positive impacts identified:

Local, national, international supply chains	The procurement option for the project will allow access to local contractors.
Human rights	Ensure the contractor is a considerate contractor. appointing via the North Wales Construction Framework will support this.
Broader service provision in the local area or the region	The project will provide the first of its kind assessment centre for the region, which will transform provision reduce out of county placements and will contribute to the reduction of LAC long term.
Reducing climate change	Carbon efficient methods to build, power and heat the new facility have been included within the design and will be firmed up during the detailed stage.

Negative impacts identified:

Local, national, international supply chains	None
Human rights	None
Broader service provision in the local area or the region	None
Reducing climate change	None